



MASTER LEDtube EM/ Mains T8

MASTER LEDtube 1200mm UE 14.5W 840 T8

The Philips MASTER LEDtube integrates a LED light source into a traditional fluorescent form factor. Its unique design creates a perfectly uniform visual appearance which cannot be distinguished from traditional fluorescent. For those that are looking for value for money within limited budget and re-lamping efforts for better light effect and lifetime.

Product data

General Information	
Cap-Base	G13 [Medium Bi-Pin Fluorescent]
RoHS mark	RoHS mark
Nominal Lifetime (Nom)	70000 h
Switching Cycle	200000X
B50L70	70000 h h
Light Technical	
Color Code	840 [CCT of 4000K]
Beam Angle (Nom)	160 °
Luminous Flux (Nom)	2500 lm
Luminous Flux (Rated) (Nom)	2500 lm
Rated Beam Angle	160 °
Correlated Color Temperature (Nom)	4000 K
Color Consistency	<6
Color Rendering Index (Nom)	83
LLMF At End Of Nominal Lifetime (Nom)	70 %
Operating and Electrical	
Input Frequency	50 to 60 Hz

Power (Nom)	14.5 W
Lamp Current (Max)	74 mA
Lamp Current (Min)	56 mA
Starting Time (Nom)	0.5 s
Warm Up Time to 60% Light (Nom)	0.5 s
Power Factor (Nom)	0.9
Voltage (Nom)	220-240 V
Temperature	
T-Ambient (Max)	35 °C
T-Ambient (Min)	-20 °C
T-Storage (Max)	65 °C
T-Storage (Min)	-40 °C
T-Case Maximum (Nom)	55 °C
Controls and Dimming	
Dimmable	No
Mechanical and Housing	
Bulb Material	Plastic

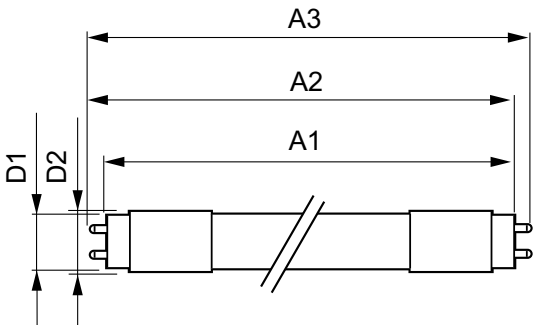
MASTER LEDtube EM/Mains T8

Product Length	1200 mm
Approval and Application	
Energy Efficiency Label (EEL)	A++
Energy Saving Product	Yes
Approval Marks	TUV CE marking RoHS compliance KEMA Keur certificate
Energy Consumption kWh/1000 h	15 kWh
Product Data	
Full product code	871869673150500

Order product name	MASTER LEDtube 1200mm UE 14.5W 840 T8
EAN/UPC - Product	8718696731505
Order code	929001376802
Numerator - Quantity Per Pack	1
Numerator - Packs per outer box	10
Material Nr. (12NC)	929001376802
Net Weight (Piece)	0.270 kg

Warnings and Safety

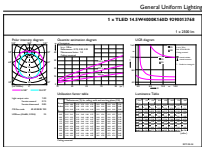
Dimensional drawing



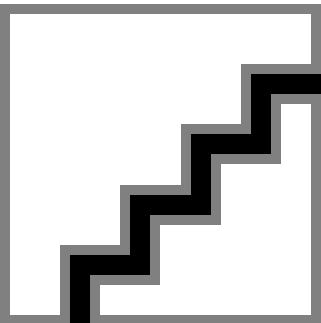
TLED 4ft 14.5-36W 2500lm 4000K G13 ND

Product	D1	D2	A1	A2	A3
MASTER LEDtube 1200mm UE 14.5W 840 T8	25.8 mm	28 mm	1198.2 mm	1205.3 mm	1212.4 mm

Photometric data



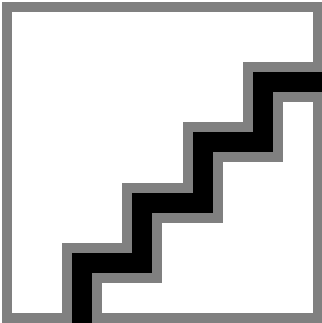
LEDtube 1200mm 15W G13 840 2500lm



LEDtube 1200mm 15W G13 840 2500lm

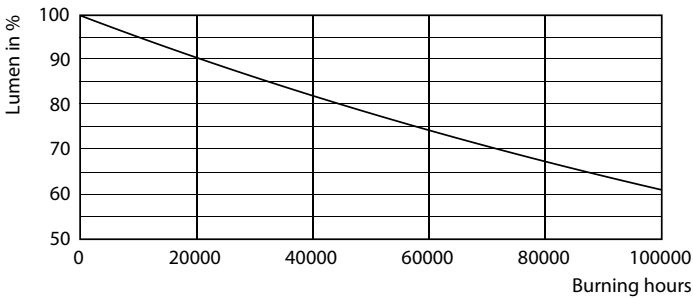
MASTER LEDtube EM/Mains T8

Photometric data

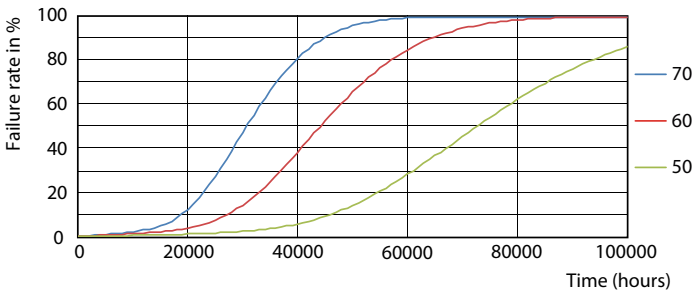


LEDtube 1200mm 15W G13 840 2500lm

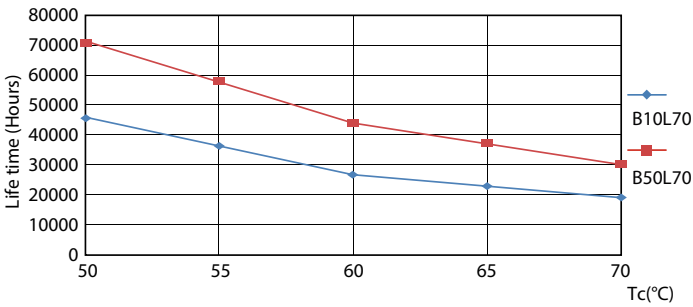
Lifetime



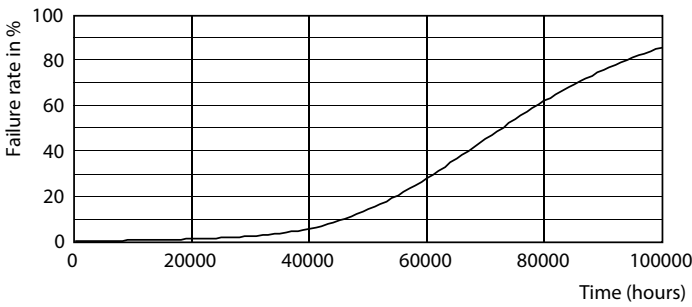
LEDtube G13 ND



LEDtube G13 ND FailureRate



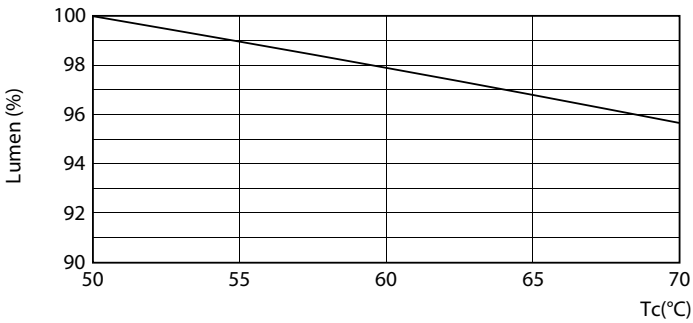
LEDtube G13 ND LifetimeVsTc



LEDtube G13 ND

MASTER LEDtube EM/Mains T8

Lifetime



LEDtube G13 14.5W ND LumenVsTc

